

# MANHA DE CARNAVAL

BLACK ORPHEUS

TABBED BY GERARD MONTALAT

STANDARD TUNING

♩ = 90

**Am7** **Bm7(b5)** **E7(b9)** **Amadd9**

E-GT

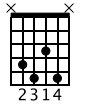
mf  
LETRING

T  
A  
B

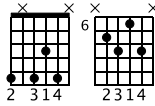
**Bm7(b5)** **Eaug** **Am7** **Dm7** **G7** **CMaj7** **C6**

LETRING

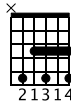
C# DIM7



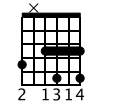
A7(b9) E DIM7



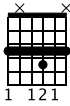
Dm7



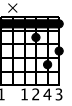
Ab 6(#11)



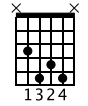
G7



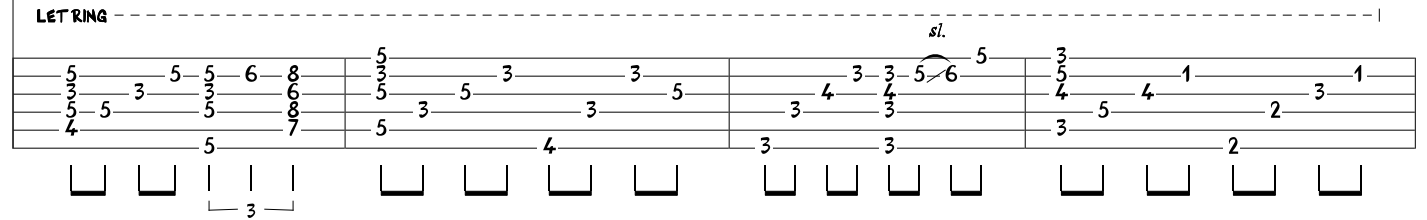
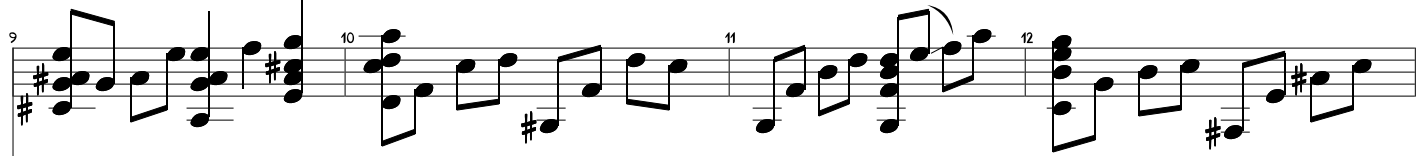
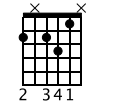
G9



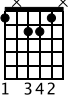
CMA7



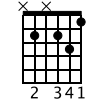
F# 7(#11)



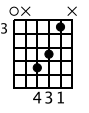
FMA7



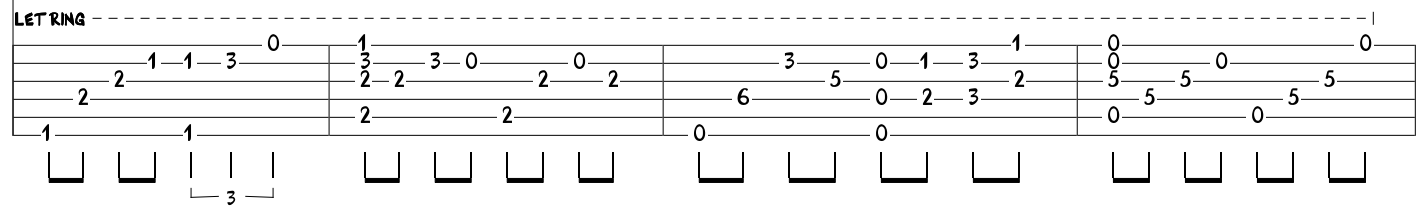
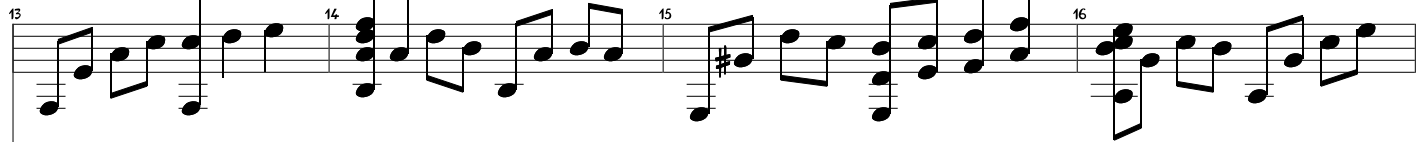
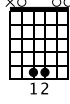
Bm7(b5)



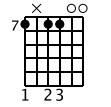
E7(#5)



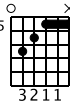
Am9



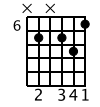
Bm7ADD11



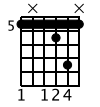
E AUG



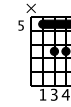
2. Em7(b5)



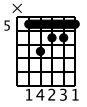
A7(#13)



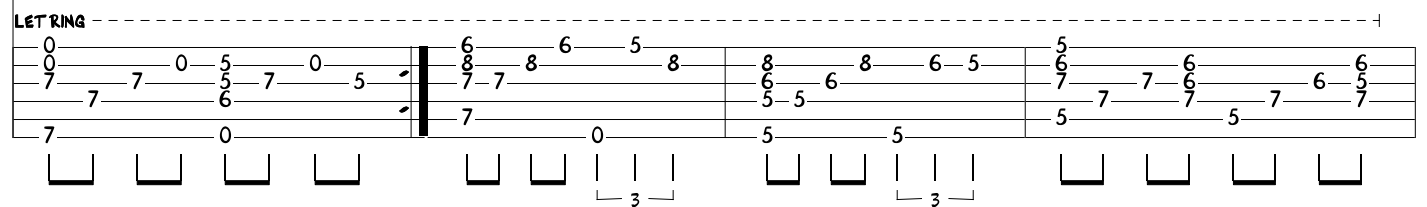
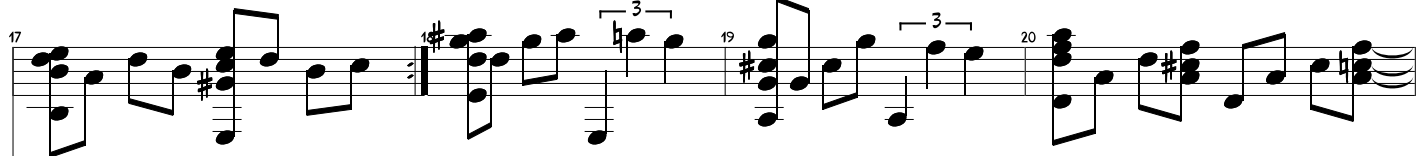
Dm



Dm7M



Dm7



**Dm7M** (5) 14231  
**Dm** (5) 13421  
**Dm/C** (5) 4 1311  
**H**  
**Bdim** (6) 2 314  
**Eaug** (5) 3211  
**Am7** (2) 33  
**Am7/G** (1) 3411  
**H**

21 22 23 24  
 LETRING  
 H H

**Fmaj7** (5) 43111  
**Eaug** (5) 3211  
*sl.*  
**Am** (9) 213  
**Am6add11** (7) 411

25 26 27 28  
 LETRING  
*sl.* LETRING

**Am** (9) 213  
**Dm7** (10) 14  
**Am9** (10) 134  
**Dm7** (10) 14  
**Am9** (10) 134  
**Dm7** (10) 14  
**E(b6)9(b9)11 E7** (10) 114 112 314

29 30 31 32  
 LETRING

**Am** **Am6(9)**

9 2 1 3

7 4 3 1 1

33 34

LET RING ----- A.H.

10 9 7 7 9 <12> 5

10 9

0

3